

\$439,000 - On Range Road, Rural Lacombe County

MLS® #A2187073

\$439,000

0 Bedroom, 0.00 Bathroom,
Land on 102.69 Acres

NONE, Rural Lacombe County, Alberta

102.69 acre land parcel located in Lacombe county just northeast of Alix. Only .5 mile off of hwy 601 on newly upgraded and widened Range Road 224A. There is 90 acres cultivated and there is \$2500+- annual lease revenue for well site.

Essential Information

| | |
|-----------|-----------------|
| MLS® # | A2187073 |
| Price | \$439,000 |
| Bathrooms | 0.00 |
| Acres | 102.69 |
| Type | Land |
| Sub-Type | Commercial Land |
| Status | Active |

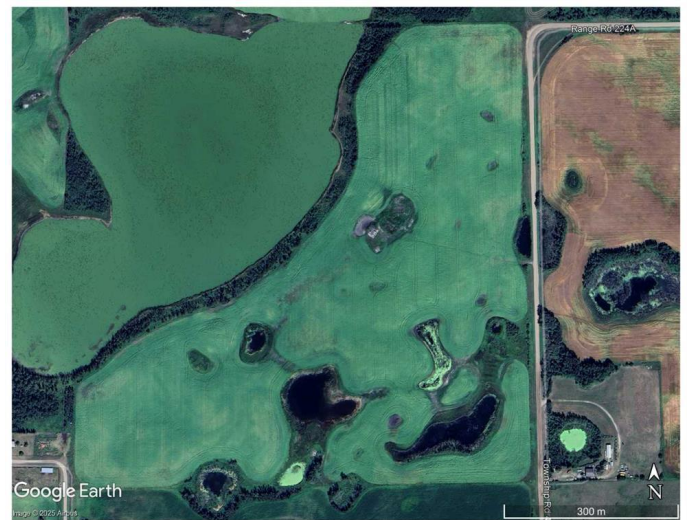
Community Information

| | |
|-------------|----------------------|
| Address | On Range Road |
| Subdivision | NONE |
| City | Rural Lacombe County |
| County | Lacombe County |
| Province | Alberta |
| Postal Code | T0C 0B0 |

Additional Information

| | |
|----------------|-------------------|
| Date Listed | January 9th, 2025 |
| Days on Market | 60 |
| Zoning | AG |

Listing Details



Listing Office RE/MAX real estate central alberta

Data is supplied by Pillar 9â„¸ MLSÂ® System. Pillar 9â„¸ is the owner of the copyright in its MLSÂ® System. Data is deemed reliable but is not guaranteed accurate by Pillar 9â„¸. The trademarks MLSÂ®, Multiple Listing ServiceÂ® and the associated logos are owned by The Canadian Real Estate Association (CREA) and identify the quality of services provided by real estate professionals who are members of CREA. Used under license.