

\$129,000 - 7, 41310 282 Range Road, Rural Lacombe County

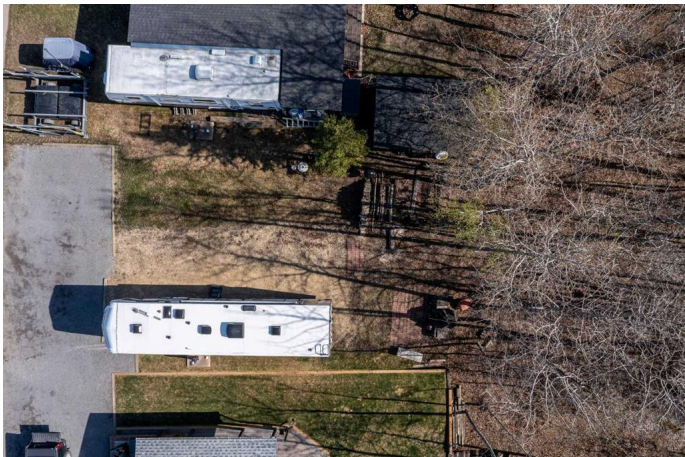
MLS® #A2219635

\$129,000

0 Bedroom, 0.00 Bathroom,
Land on 0.08 Acres

N/A, Rural Lacombe County, Alberta

Visit REALTOR® website for additional information. Lakeside Living at Its Best! This exceptional recreation lot backs onto Gull Lake, offering unbeatable access & views in a beautiful location at DeGraff's Resort. Park your RV or Park Model Home and enjoy the perks of this fully serviced (3 seasons) lot in a gated community with power, 50-amp service, water & sewer already in place. There is room for 3 - 4 vehicles to park on a limestone pad. Unwind by the outdoor fireplace after a day on the water. Whether it's boating, relaxing, or just soaking in the surroundings, this is the laid-back, friendly resort lifestyle everyone dreams of!



Essential Information

| | |
|-----------|------------------|
| MLS® # | A2219635 |
| Price | \$129,000 |
| Bathrooms | 0.00 |
| Acres | 0.08 |
| Type | Land |
| Sub-Type | Residential Land |
| Status | Active |

Community Information

| | |
|-------------|-------------------------|
| Address | 7, 41310 282 Range Road |
| Subdivision | N/A |
| City | Rural Lacombe County |

| | |
|-------------|----------------|
| County | Lacombe County |
| Province | Alberta |
| Postal Code | T4L 2N3 |

Additional Information

| | |
|----------------|----------------|
| Date Listed | May 10th, 2025 |
| Days on Market | 98 |
| Zoning | R-RVR |

Listing Details

| | |
|----------------|-----------------------|
| Listing Office | PG Direct Realty Ltd. |
|----------------|-----------------------|

Data is supplied by Pillar 9â„¢ MLS® System. Pillar 9â„¢ is the owner of the copyright in its MLS® System. Data is deemed reliable but is not guaranteed accurate by Pillar 9â„¢. The trademarks MLS®, Multiple Listing Service® and the associated logos are owned by The Canadian Real Estate Association (CREA) and identify the quality of services provided by real estate professionals who are members of CREA. Used under license.