

# \$545,000 - 13 Horne Close, Sylvan Lake

MLS® #A2224246

**\$545,000**

3 Bedroom, 2.00 Bathroom, 1,636 sqft

Residential on 0.12 Acres

Hewlett Park, Sylvan Lake, Alberta

Welcome to this 1.5-story home located on a conveniently located close in beautiful Sylvan Lake! Step inside to a bright and open concept main floor featuring a spacious living room and seamless flow into the kitchen with a central island, pantry, perfect for entertaining. Two bedrooms, a full bath, and convenient main floor laundry complete this level.

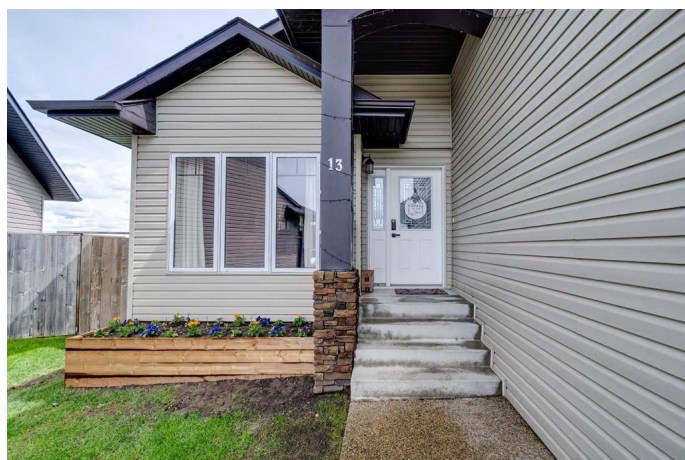
Upstairs is your private primary retreat, complete with dual sinks, a luxurious soaker tub, and a large tiled walk-in shower, walk-through closet, and a loft-style office . The basement is framed and ready for your finishing touches.

Outside, enjoy summer nights on the 3 tiered deck, take advantage of the underground sprinklers, and park your boat or RV on the rear gravel pad.

Recent updates include a new dishwasher 2024, washer/dryer 2024, fiberglass lifetime hot water tank 2023, deck extension 2024, irrigation system 2023, reverse osmosis 2023, water softener 2023, and energy-efficient mini cooling/heat pumps 2023 in the main living area and bedrooms—providing customizable comfort year-round.

Built in 2007

## Essential Information



MLS® #	A2224246
Price	\$545,000
Bedrooms	3
Bathrooms	2.00
Full Baths	2
Square Footage	1,636
Acres	0.12
Year Built	2007
Type	Residential
Sub-Type	Detached
Style	2 Storey
Status	Active

### Community Information

Address	13 Horne Close
Subdivision	Hewlett Park
City	Sylvan Lake
County	Red Deer County
Province	Alberta
Postal Code	T4S 0C4

### Amenities

Parking Spaces	4
Parking	Double Garage Attached
# of Garages	2

### Interior

Interior Features	Double Vanity, High Ceilings, Kitchen Island, Pantry, Vaulted Ceiling(s), Vinyl Windows, Soaking Tub
Appliances	Dishwasher, Refrigerator, Washer/Dryer, Stove(s)
Heating	Forced Air
Cooling	Central Air
Has Basement	Yes
Basement	Full, Partially Finished

### Exterior

Exterior Features	BBQ gas line, Private Yard
Lot Description	Cul-De-Sac, No Neighbours Behind, Triangular Lot, Underground Sprinklers

Roof	Asphalt Shingle
Construction	Stone, Vinyl Siding
Foundation	Poured Concrete

### **Additional Information**

Date Listed	May 24th, 2025
Days on Market	15
Zoning	R5

### **Listing Details**

Listing Office	Royal LePage Network Realty Corp.
----------------	-----------------------------------

Data is supplied by Pillar 9â„¢ MLS® System. Pillar 9â„¢ is the owner of the copyright in its MLS® System. Data is deemed reliable but is not guaranteed accurate by Pillar 9â„¢. The trademarks MLS®, Multiple Listing Service® and the associated logos are owned by The Canadian Real Estate Association (CREA) and identify the quality of services provided by real estate professionals who are members of CREA. Used under license.