

# \$139,900 - 201, 4722 44 Street, Sylvan Lake

MLS® #A2234352

**\$139,900**

2 Bedroom, 1.00 Bathroom, 756 sqft

Residential on 0.00 Acres

Palo, Sylvan Lake, Alberta

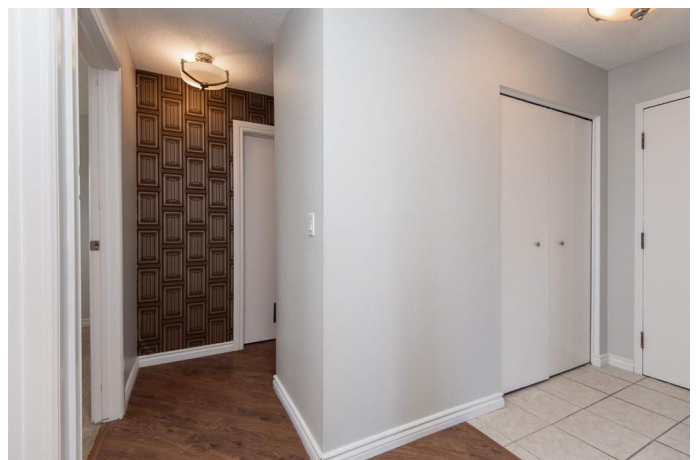
Affordable living in Sylvan Lake! This freshly painted 2-bedroom, 1-bath condo is just a 10-minute walk to the lake and ready for immediate possession. The well-managed building has seen recent upgrades including a new roof, boiler (2021), balconies, and updated carpets in the common areas. Condo fees cover heat, water, sewer, garbage, exterior maintenance, and moreâ€”just pay your own electricity. Coin laundry is available in the building, with the option to install in-suite laundry. Airbnb is permitted, making this a great investment or vacation property. Includes 2 parking stalls for added convenience.

Built in 1979

## Essential Information

MLS® #	A2234352
Price	\$139,900
Bedrooms	2
Bathrooms	1.00
Full Baths	1
Square Footage	756
Acres	0.00
Year Built	1979
Type	Residential
Sub-Type	Apartment
Style	Single Level Unit
Status	Active

## Community Information



Address	201, 4722 44 Street
Subdivision	Palo
City	Sylvan Lake
County	Red Deer County
Province	Alberta
Postal Code	T4S1G9

### **Amenities**

Amenities	Coin Laundry
Parking Spaces	2
Parking	Off Street

### **Interior**

Interior Features	See Remarks
Appliances	Dishwasher, Electric Range, Microwave Hood Fan, Refrigerator
Heating	Baseboard
Cooling	None
# of Stories	4

### **Exterior**

Exterior Features	Balcony
Roof	Asphalt/Gravel
Construction	Mixed, Stucco
Foundation	Poured Concrete

### **Additional Information**

Date Listed	June 26th, 2025
Days on Market	3
Zoning	R3

### **Listing Details**

Listing Office	RE/MAX real estate central alberta
----------------	------------------------------------

Data is supplied by Pillar 9â„¢ MLS® System. Pillar 9â„¢ is the owner of the copyright in its MLS® System. Data is deemed reliable but is not guaranteed accurate by Pillar 9â„¢. The trademarks MLS®, Multiple Listing Service® and the associated logos are owned by The Canadian Real Estate Association (CREA) and identify the quality of services provided by real estate professionals who are members of CREA. Used under license.